

## NEW NISO RECESSED S 24Vdc

IP67 IK09 CE III WP 

TIPOLOGIA / TYPOLOGY

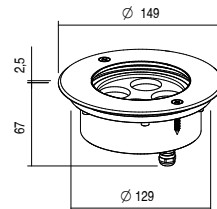
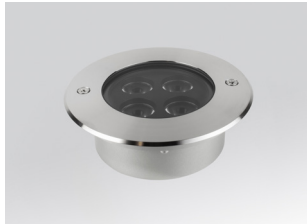
Incasso | Recessed

POSIZIONE INSTALLATIVA | INSTALLATION POSITION

A terra | On ground

AMBIENTE INSTALLATIVO | INSTALLATION LOCATION

Esterno | Outdoor



NISO RECESSED - S

17W

 kg 1,35

**NEW** NISO RECESSED S 24Vdc

**CARATTERISTICHE ELETTRICHE | ELECTRICAL FEATURES**

POTENZA ASSORBITA   POWER CONSUMPTION	17W
ALIMENTAZIONE   POWER SUPPLY	24Vdc
ALIMENTATORE   POWER SUPPLY UNIT	17W - 24Vdc (Non incluso   Not included)
COLLEGAMENTO   CONNECTION	Parallelo   Parallel

**CARATTERISTICHE ILLUMINOTECNICHE | LIGHTING FEATURES**

COLORE LED   LED COLOUR	2200K, 2700K, 3000K, 4000K, Red, Green, Blue
INDICE RESA CROMATICA CRI   CRI	>80 (2200K, 2700K, 3000K, 4000K)
BINNING	3 McAdam step
OTTICHE   OPTICS	9°, 13°, 30°, 40°, ASYM, 20°x40°, 60°
FLUSSO REALE EMESSO - 3000K REAL OUTPUT FLUX	17W 1538lm 30°
DURATA MEDIA LED   AVERAGE LED LIFE	50.000h L80 B10

**CARATTERISTICHE MECCANICHE | MECHANICAL FEATURES**

PESO   WEIGHT	kg 1,35
FINITURE   FINISHES	Acciaio, Acciaio Spazzolato Steel, Brushed Steel
INSTALLAZIONE   INSTALLATION	A incasso a terra con cassaforma (non inclusa), viti autofilettanti (incluse) Recessed on ground with housing box (not included), self-tapping screws (included)
MATERIALE   MATERIAL	Corpo in alluminio anticorodal, ghiera in acciaio Inox AISI 316L, vetro temperato trasparente Anticorodal aluminium body, AISI 316L stainless trim, transparent tempered glass


**CARATTERISTICHE GENERALI | GENERAL FEATURES**

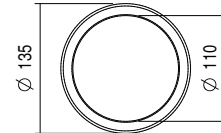
TEMPERATURA DI ESERCIZIO OPERATING TEMPERATURE	-10°C +45°C
GRADO DI PROTEZIONE   INGRESS PROTECTION	IP67
GRADO DI RESISTENZA   IMPACT RESISTANCE	IK09
GLOW WIRE TEST   GLOW WIRE TEST	960°C
TEMPERATURA MASSIMA APPARECCHIO MAX. TEMPERATURE OF FIXTURE	40° @ Ta = 25°
CLASSE DI ISOLAMENTO   APPLIANCE CLASS	III
CALPESTABILE   WALKOVER	Si / Yes
CARRABILE   DRIVE OVER	2000 Kg
SICUREZZA STANDARD   STANDARD SAFETY	WP System
SICUREZZA FOTOBIOLOGICA PHOTOBIOLOGICAL SAFETY	GR1

NEW

**NISO RECESSED S 24Vdc**

## ACCESSORI | ACCESSORIES

<b>CODICE / CODE</b>	<b>CC110</b>
<b>TIPOLOGIA / TYPOLOGY</b>	<b>Cassaforma</b> <i>Housing box</i>  kg 0,31
<b>MATERIALE   MATERIAL</b>	<b>Polipropilene</b> <i>Prolypropylene</i>



## FILTRI | FILTER

<b>CODICE / CODE</b>	<b>HC</b>
<b>TIPOLOGIA / TYPOLOGY</b>	<b>Filtro Honeycomb</b> <i>Honeycomb filter</i>

